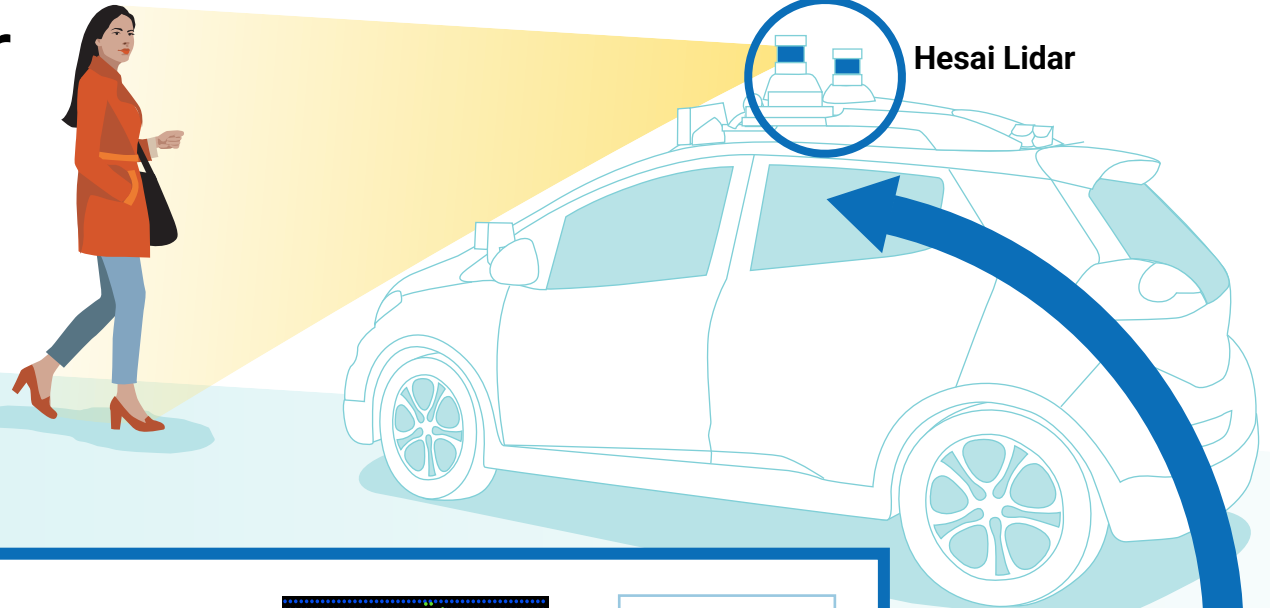


# How Hesai Lidar Ensures Data Security

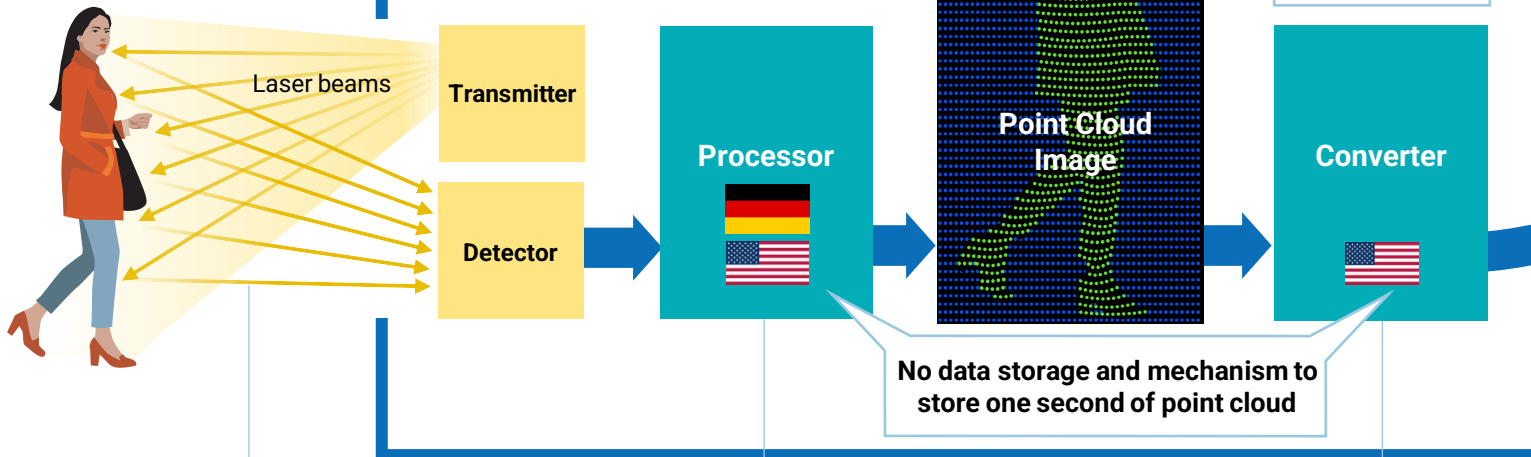


- Laser components
- Components that handle data (made in the U.S. and Germany)

## INSIDE A TYPICAL HESAI LIDAR

Hesai lidars do not capture facial features or other biometric data

Hesai lidars have no wireless, cellular or Bluetooth connections



No data storage and mechanism to store one second of point cloud

- 1 Laser beams emitted by the transmitter bounce off objects and return to the detector. The detector then generates signals, which are sent to the **Processor**.
- 2 The **Processor** generates a point cloud image – the 3D shape of objects – and sends it to the **Converter**.
- 3 The **Converter** changes the image into a format recognizable by the car's computer, and sends it to the car through a one-way secure cable.
- 4 The car's computer uses the data to navigate and make driving decisions. All data is fully owned and controlled by the car and not Hesai.